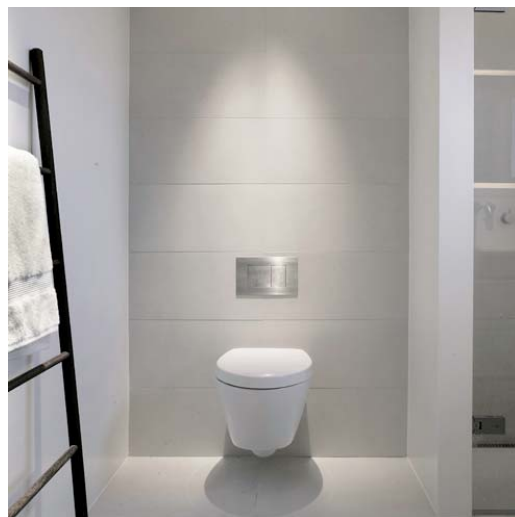
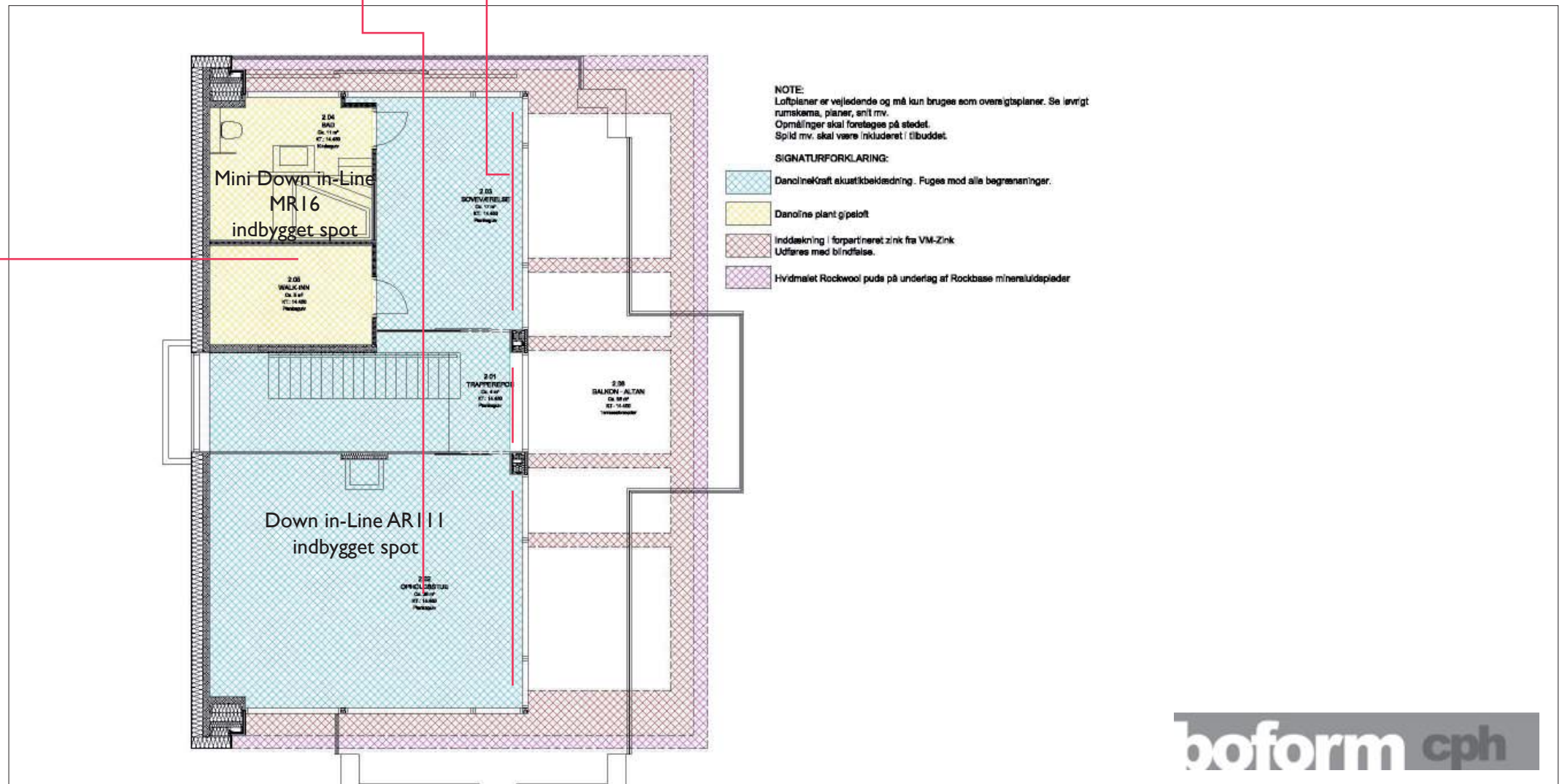
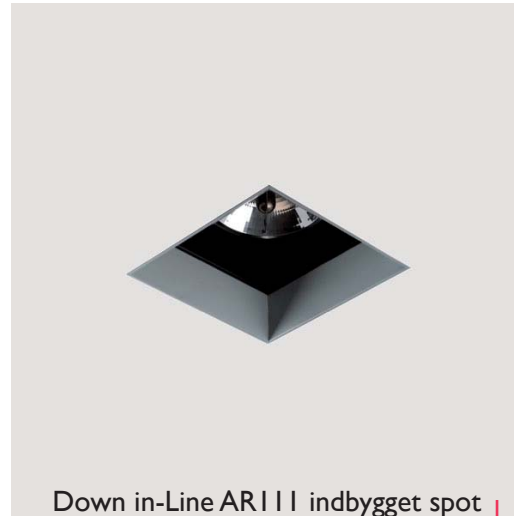


1. sal

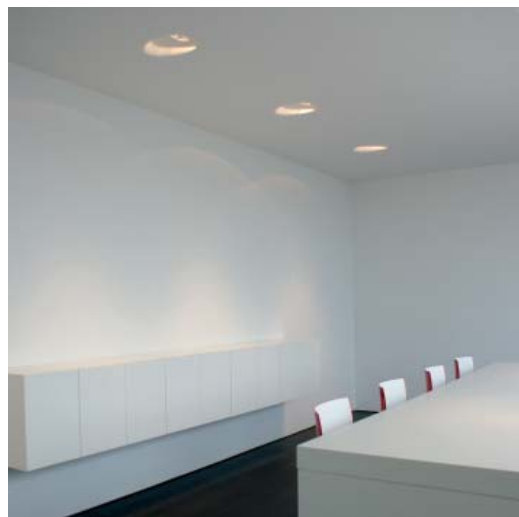
Langs vinduespartier bygges skinner ind i loftet, bestykket med MR16, energisaving.
I opholdstue, repos og soveværelse Down in line, uden kant, AR111, energisaving.
I walkin og badeværelse Down In Line MR16, energisaving.



Stue etage

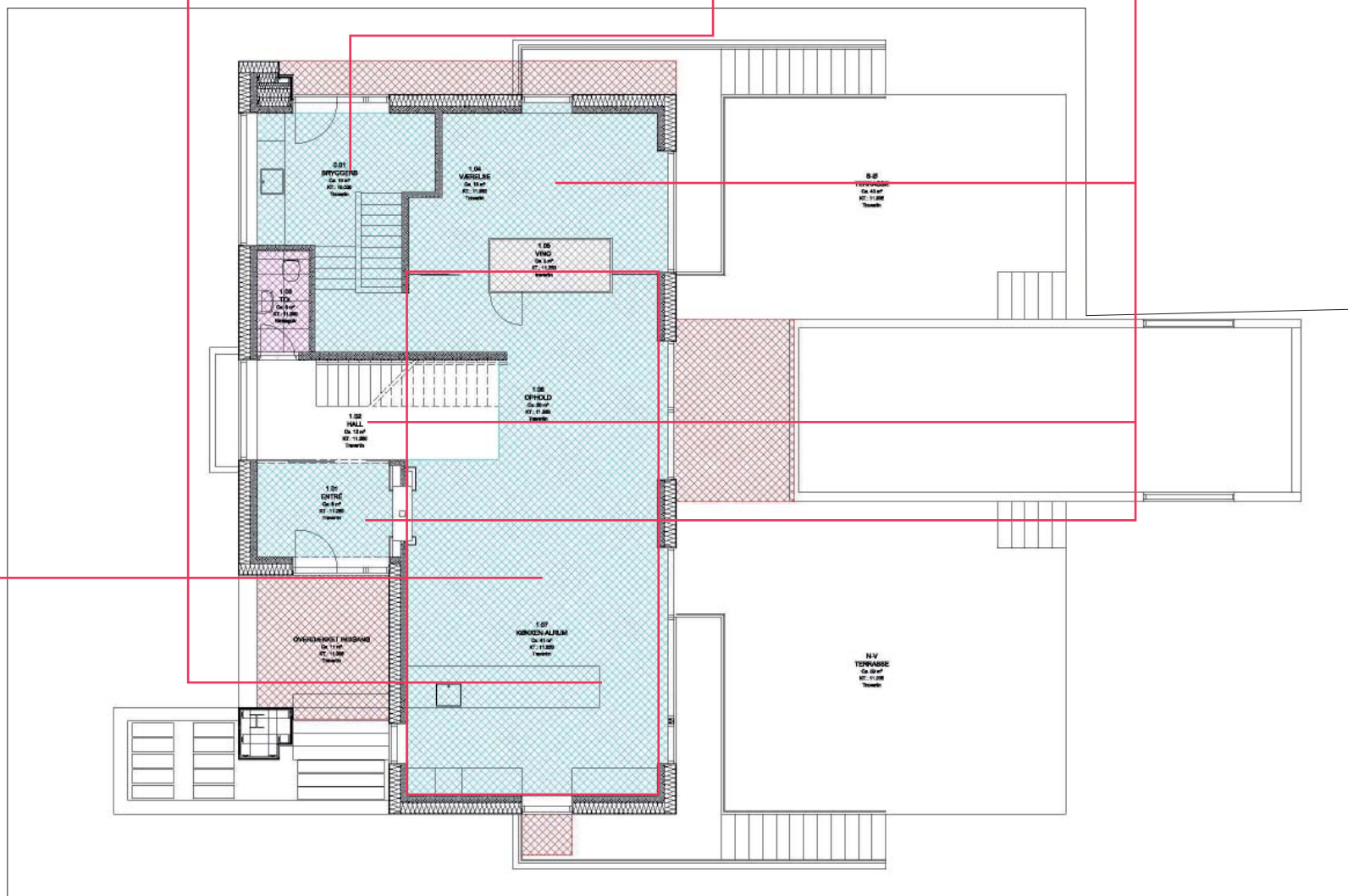
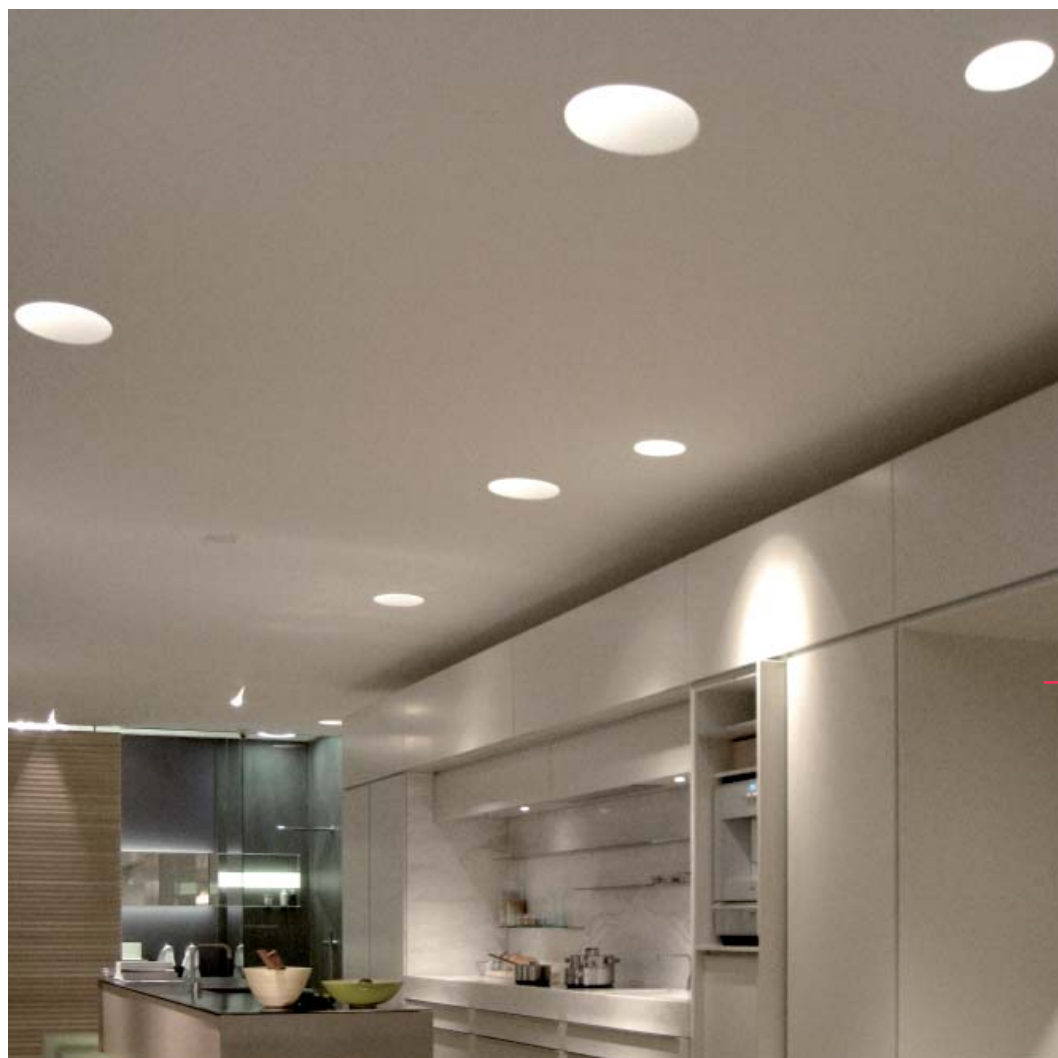


I entre, trapperum og kontor Down in line AR111, energisaving.
I bryggers Down in line MR16, energisaving
I køkken, spise og opholds stue Illumination AR111, energisaving



Mini Down in-Line MR16 indbygget spot

Down in-Line AR111 indbygget spot

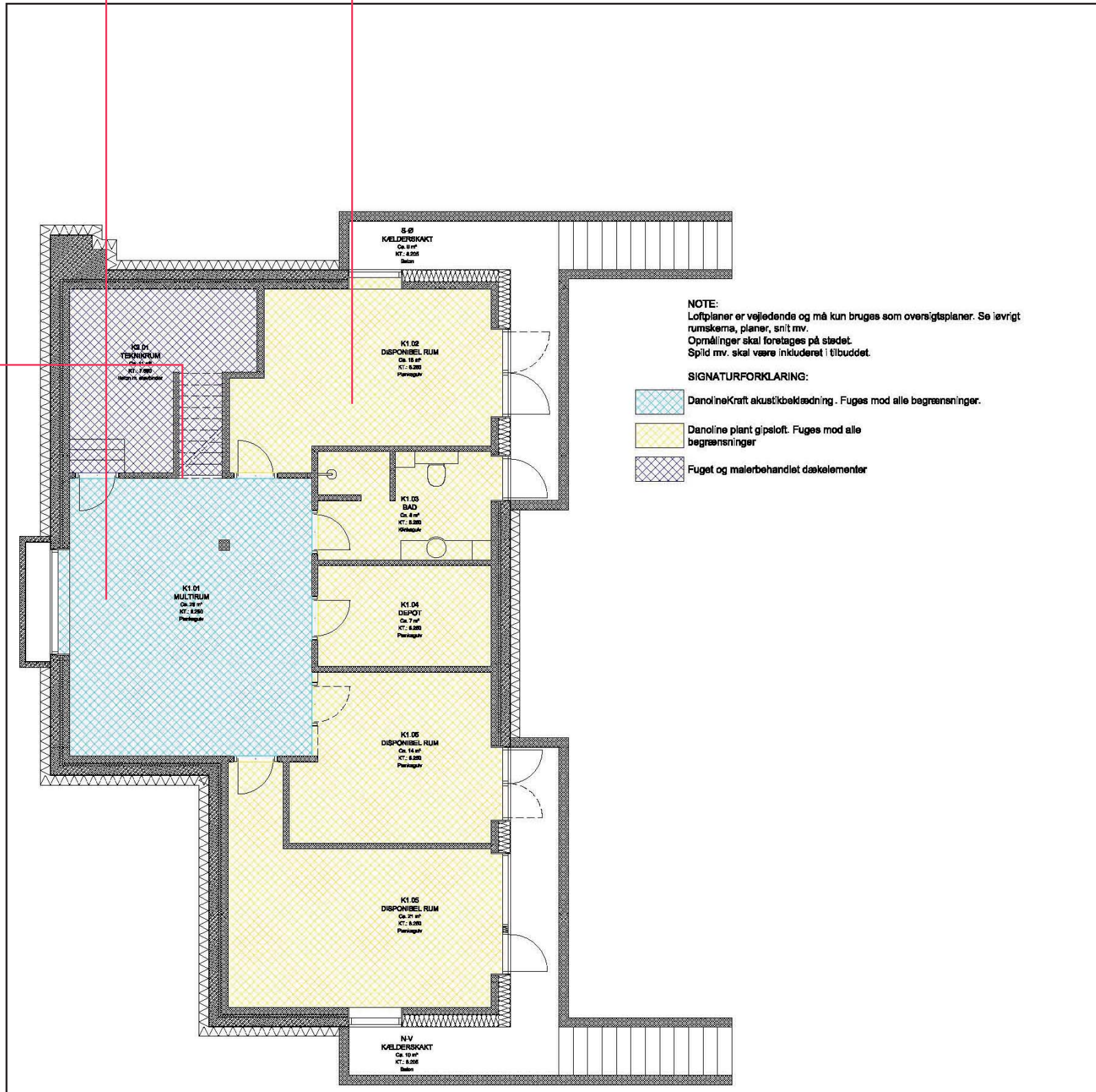


kælderplan



Mini Down in-Line MR16 indbygget spot

Kælder etagen belyses med Down In Line, spot uden kant, tilbagetrukket lyskilde. MR16 Energisaving



Udelys

